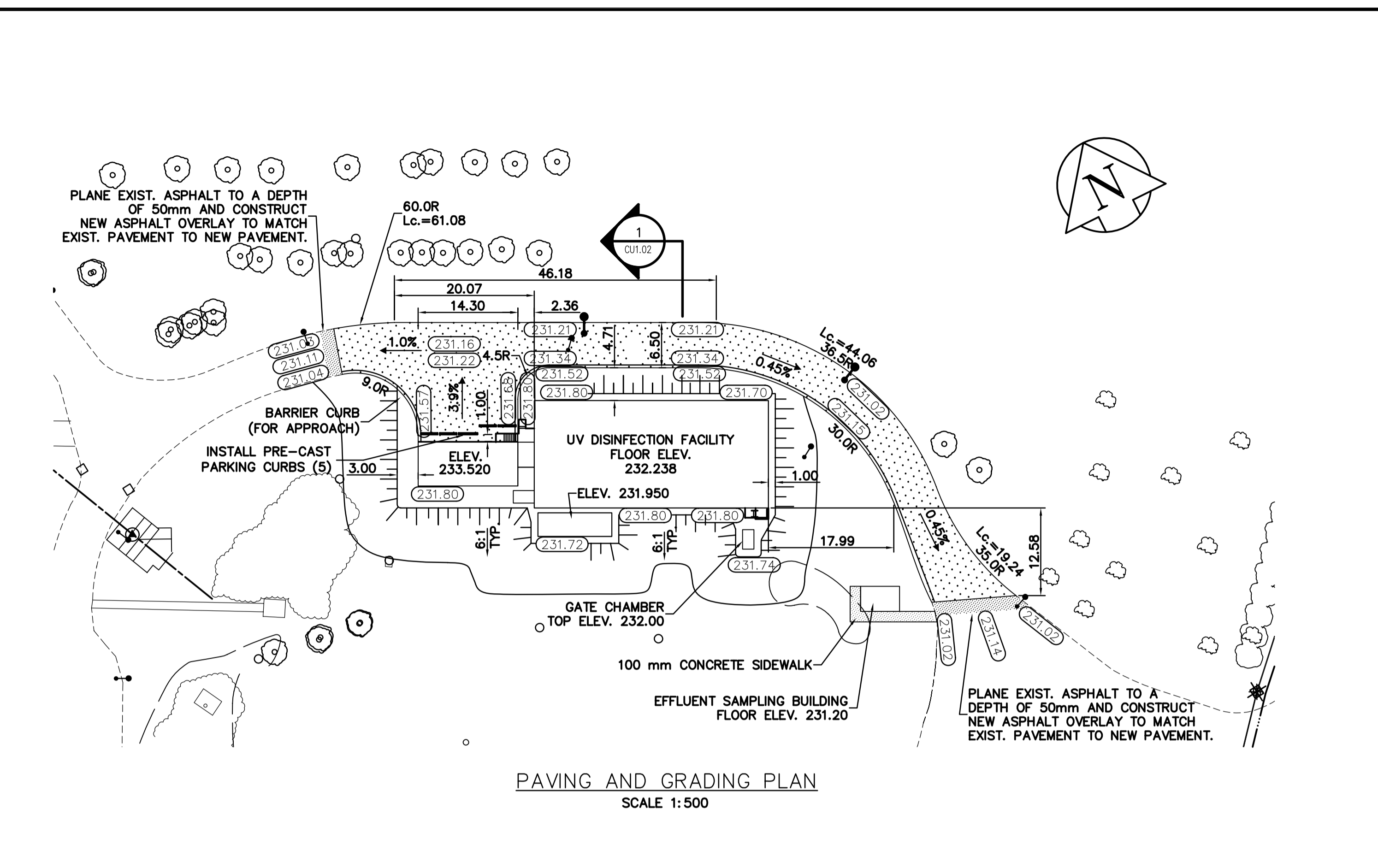
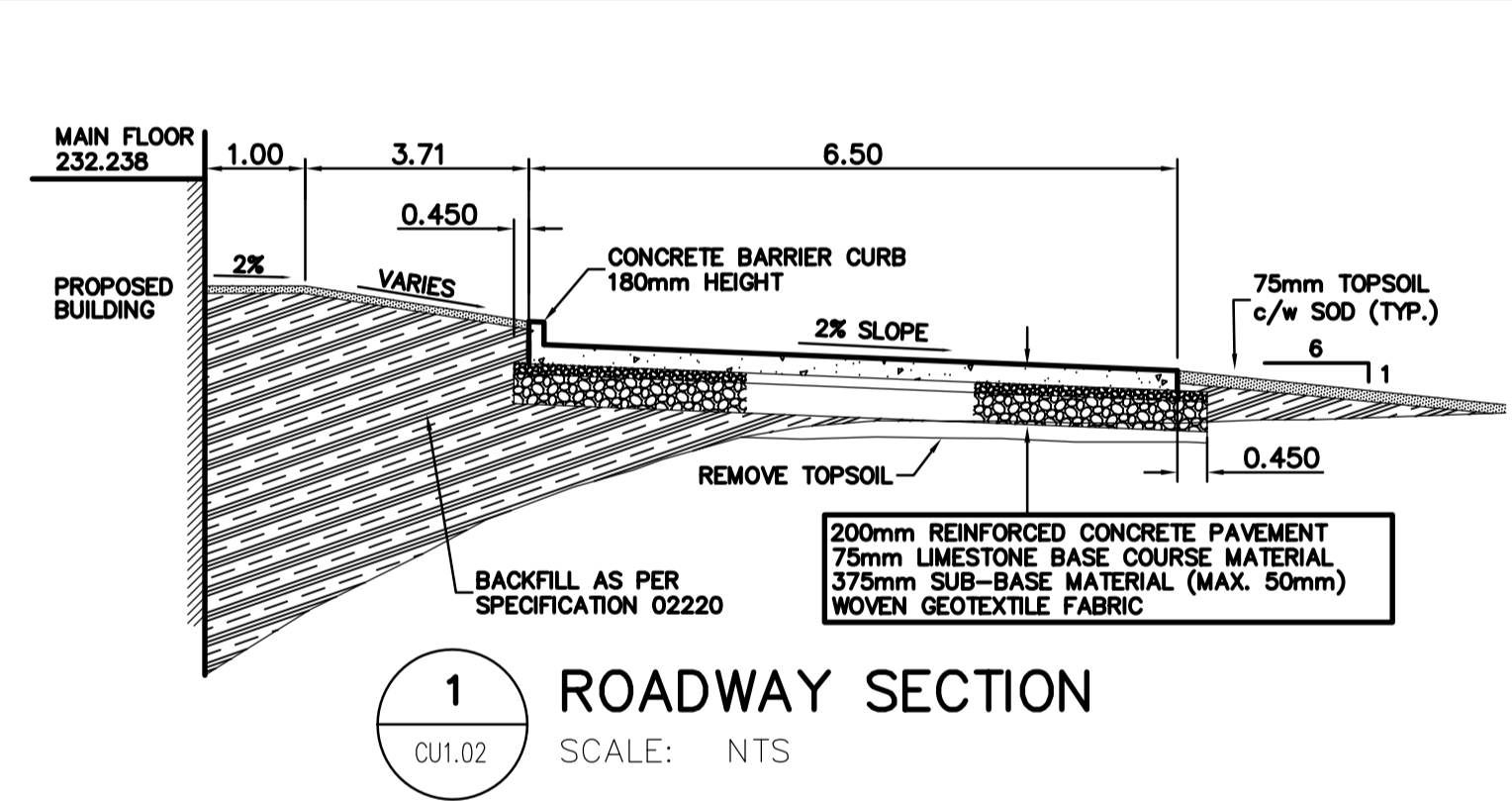


SEWER AND WATER SERVICING PLAN
SCALE 1:500



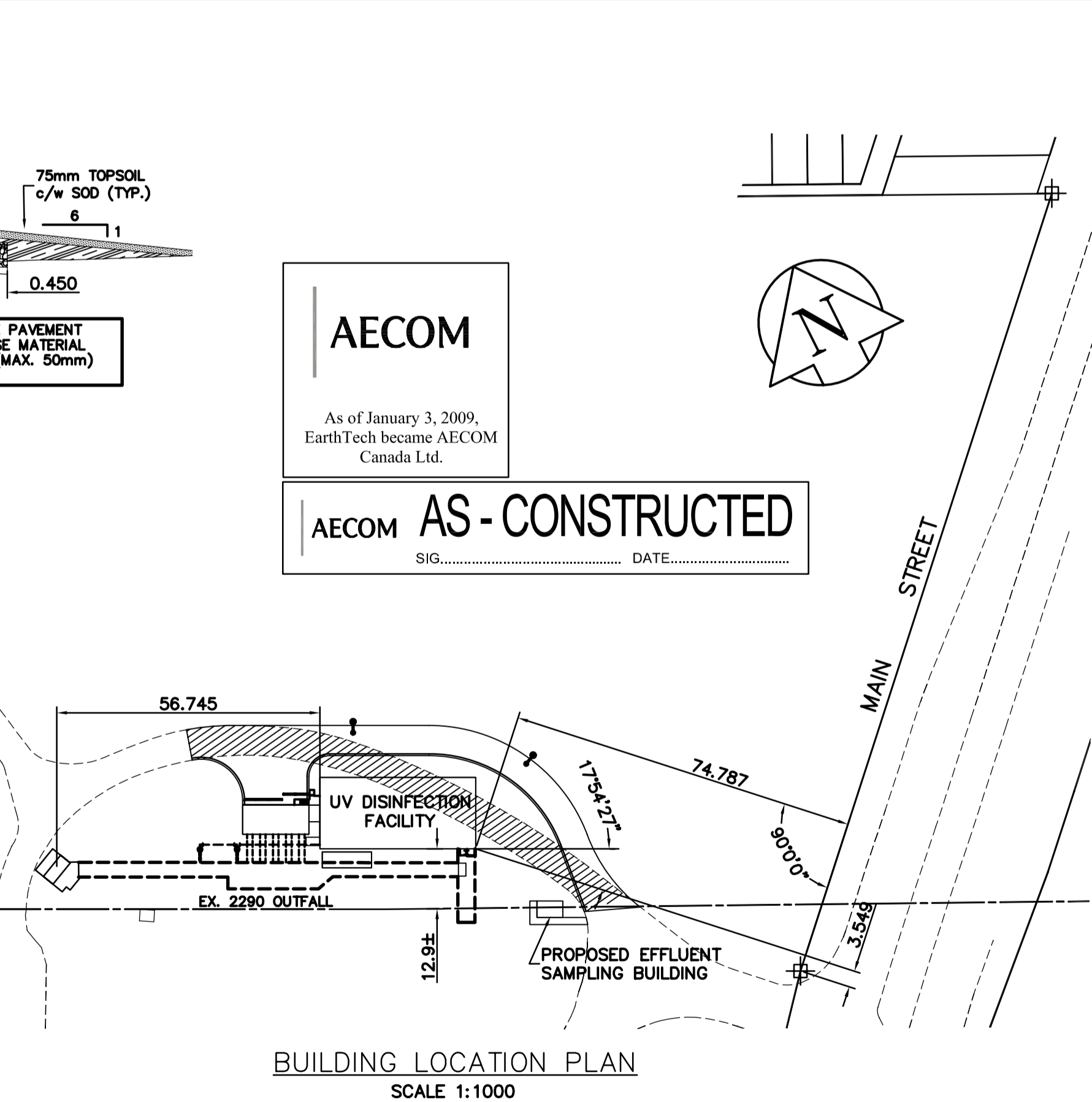
PAVING AND GRADING PLAN
SCALE 1:500



1 ROADWAY SECTION
SCALE: NTS

- NOTES:
1. ALL WORK AND MATERIALS SHALL CONFORM TO THE CITY OF WINNIPEG STANDARD CONSTRUCTION SPECIFICATIONS.
 2. MINIMUM COVER ON PROPOSED WATERMAIN 2.5m EXCEPT WHERE NOTED.
 3. INSTALL HYDRANT WITH FLANGE ELEVATION 50mm - 150mm ABOVE FINISHED GRADE.
 4. LOCATION OF UTILITIES SHOWN ON DRAWINGS ARE APPROXIMATE. THE CONTRACTOR SHALL FIELD LOCATE ALL UTILITIES PRIOR TO CONSTRUCTION.
 5. ALL VALVES SHALL BE BLACK TOP (CLOCKWISE TO CLOSE).
 6. RESTORE SURFACES TO A CONDITION BETTER THAN OR EQUAL TO ORIGINAL CONDITION. ALL BOULEVARD AREAS TO BE RESTORED WITH TOPSOIL AND SOD.
 7. LOCATE EXISTING OUTFALL AT ALL CONNECTION AND CROSSING POINTS PRIOR TO ANY CONSTRUCTION.

AS BUILT PER
GATEWAY
CONSTRUCTION & ENGINEERING LTD.
MARCH 14/07



BUILDING LOCATION PLAN
SCALE 1:1000

| | | | | | |
|---------------------|---------------------|---------------------|-------------------|---------------------|---------------------|
| 150 mm W.M. | WATERMAIN | 150 mm W.M. | HYDRO | 150 mm W.M. | WATERMAIN |
| Hydrant | HYDRANT | Hydrant | M.T.S. | Hydrant | HYDRANT |
| Valve | VALVE | Valve | CONCRETE | Valve | VALVE |
| Land Drainage Sewer | LAND DRAINAGE SEWER | Land Drainage Sewer | ASPHALT | Land Drainage Sewer | LAND DRAINAGE SEWER |
| Wastewater Sewer | WASTEWATER SEWER | Wastewater Sewer | PROPERTY LINE | Waste Water Sewer | WASTE WATER SEWER |
| Manhole | MANHOLE | Manhole | SURVEY BAR | Profile | PROFILE |
| Catch Basin | CATCH BASIN | Catch Basin | ELEVATION | Lamp Standard | LAMP STANDARD |
| Curb Inlet | CURB INLET | Curb Inlet | TREE | | |
| Junctions | JUNCTIONS | Junctions | Sprinkler Line | | |
| Culvert | CULVERT | Culvert | CONCRETE SIDEWALK | | |
| Gas | GAS | Gas | FENCE | | |
| EXISTING | LEGEND - PLAN | PROPOSED | EXISTING | LEGEND - PROFILE | PROPOSED |

AECOM
Certificate of Authorization
AECOM Canada Ltd.
Original dated on:
No. 4671 Date: 2005/02/18

EARTH TECH
Earth Tech (Canada) Inc. Winnipeg, Manitoba 204.477.5381

DESIGNED BY: GSK
CHECKED BY: JEH
DRAWN BY: GDL
APPROVED BY: DT

HOR. SCALE: AS NOTED
VERTICAL SCALE: T. KUJARTANSON

2 AS-CONSTRUCTED DRAWING 07/03/14 GC
1 ISSUED FOR CONSTRUCTION 05/06/08 LAE
0 ISSUED FOR TENDER 05/02/18 JEH

NO. REVISIONS DATE BY DATE 2004/11/04 DATE 2005-02-18

ENGINEER'S SEAL
ORIGINAL SIGNED BY: D.J. TANIGUCHI
DATE: FEB. 18/05

THE CITY OF WINNIPEG
Winnipeg WATER AND WASTE DEPARTMENT

NEWPCC - SECONDARY EFFLUENT
UV DISINFECTION FACILITY

CITY FILE NUMBER
SHEET OF
CITY DRAWING NUMBER
1-0101U-C0001-001-02

CONSULTANT DRAWING NO. 66303D-CU1.02
SITE WORKS
SEWER AND WATER SERVICING,
PAVING AND GRADING